



PEREGRINE  
METALS LTD.

# Exploration Update

## *Resource & Drilling*

October 4, 2010

TSX: PGM  
[www.pmet.com](http://www.pmet.com)

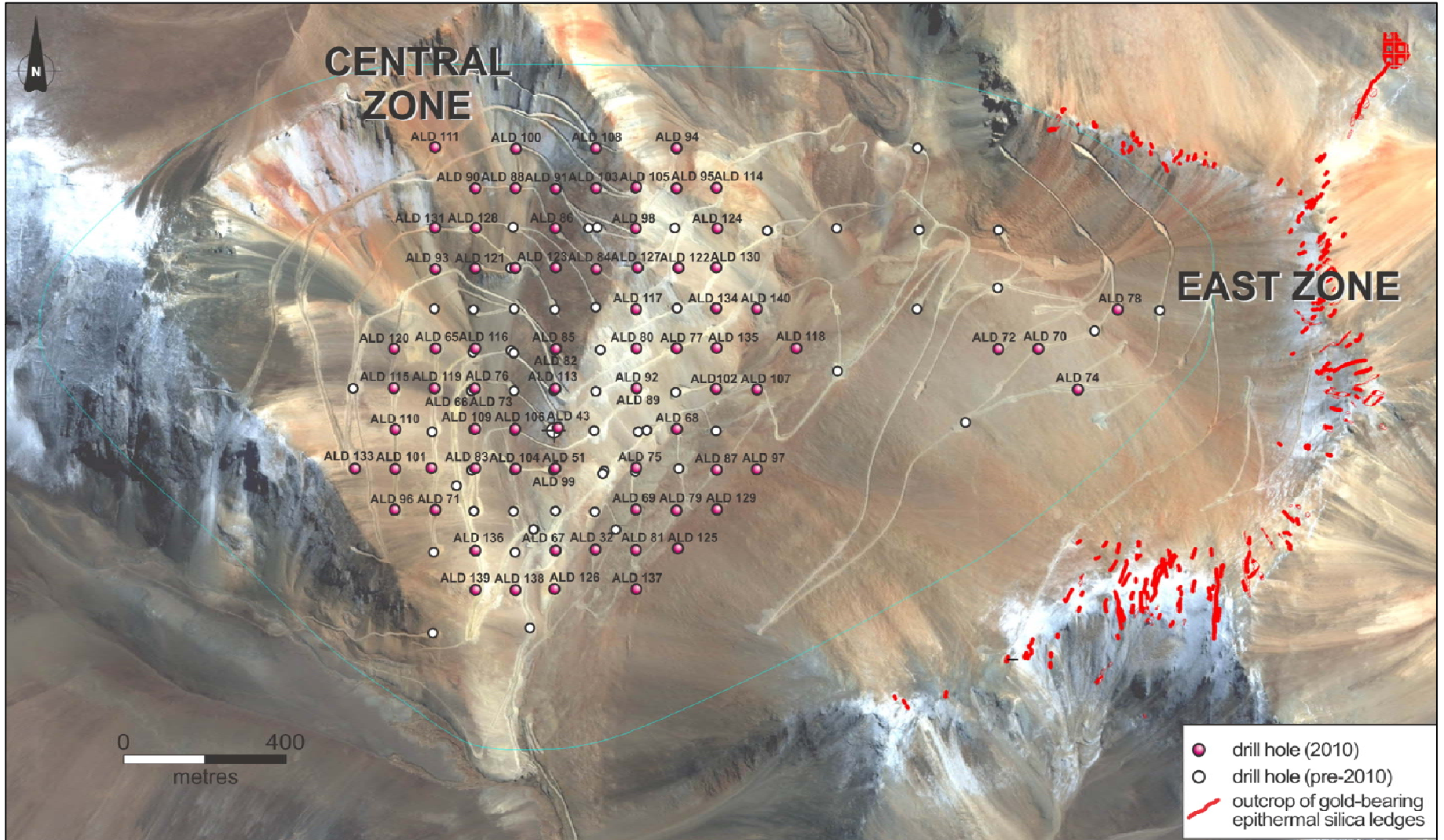


# Location



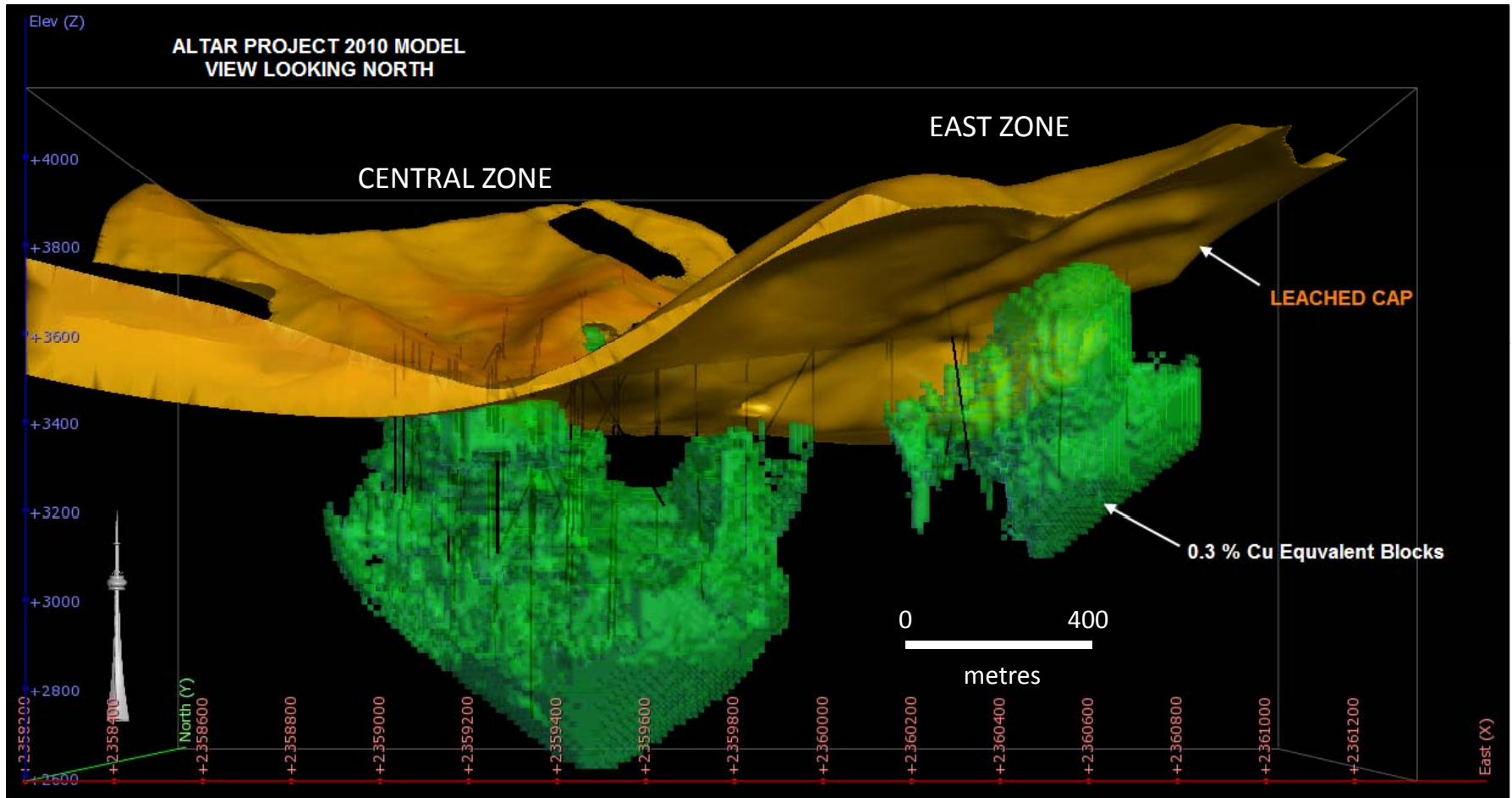


# 2010 Drill Hole Locations

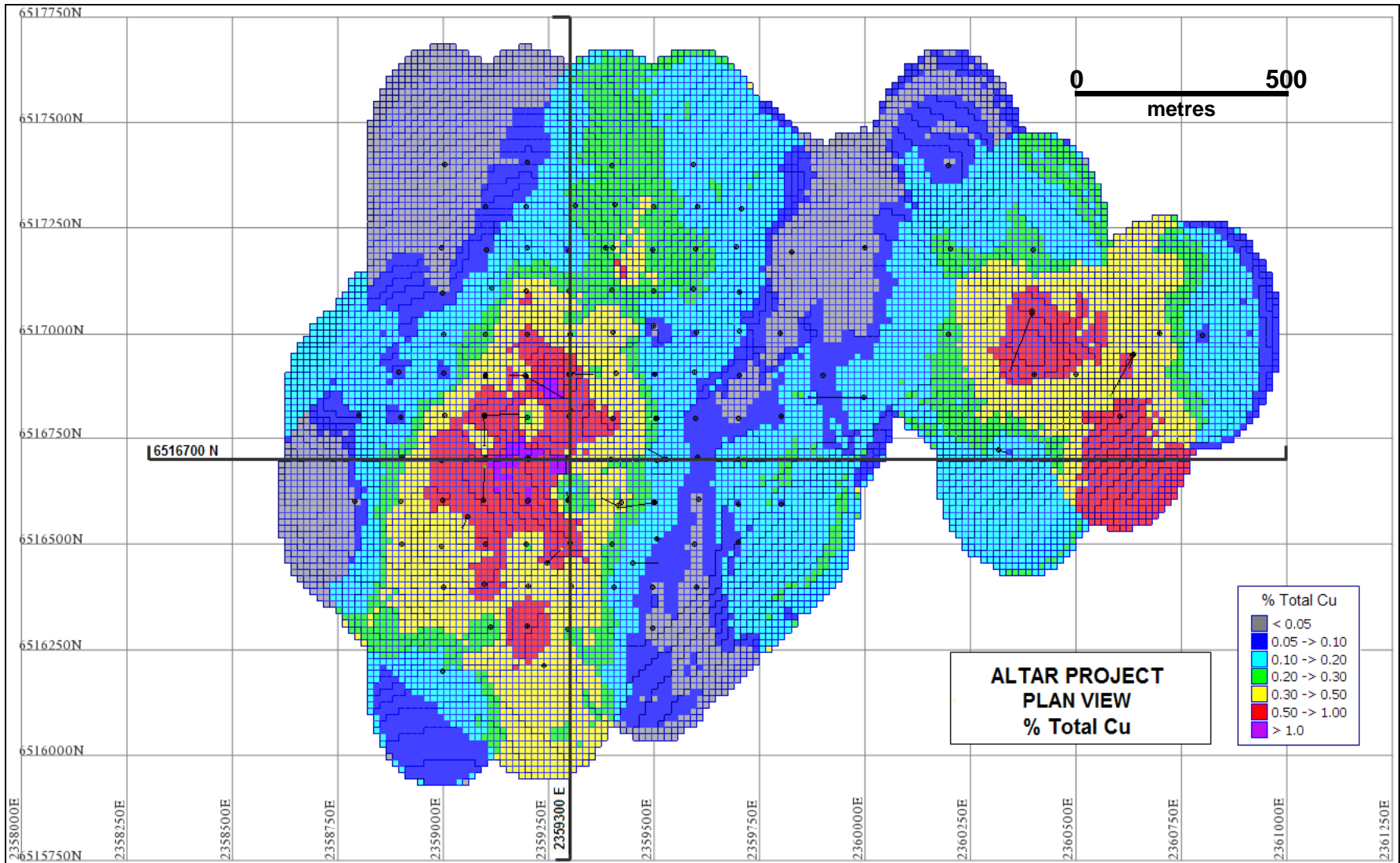




# 3-D Resource Image



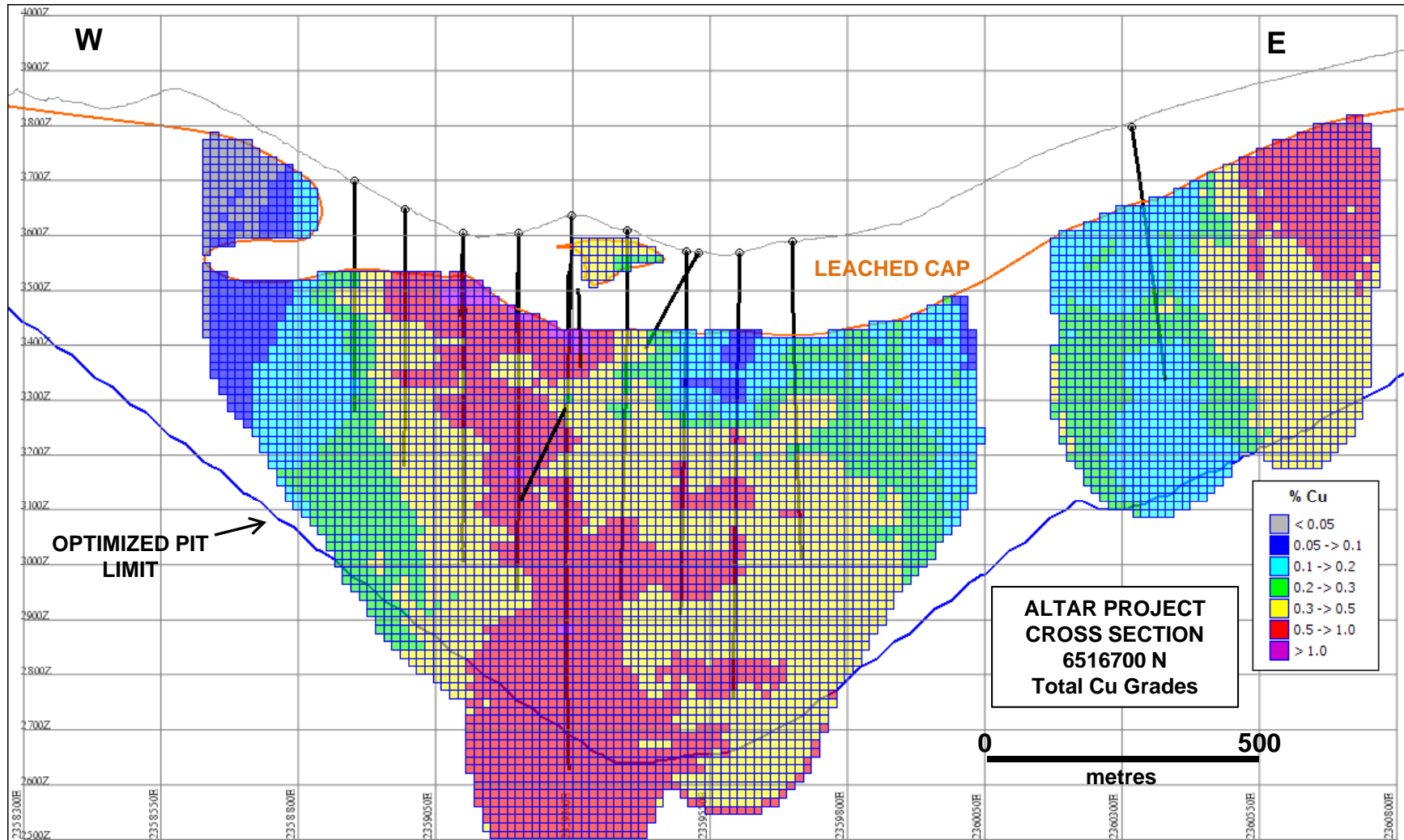
# Updated Resource Block Model



2010 Altar Resource block model. The colors represent copper values in the upper 15 m of the resource model and based on a 0.3% CuEq cut-off. The resource block model and supporting drill hole data are presented in the 2010 NI 43-101 technical report which will be available on the Peregrine Metals website at [www.pmet.com](http://www.pmet.com) or on SEDAR at [www.sedar.com](http://www.sedar.com) by November 18, 2010.



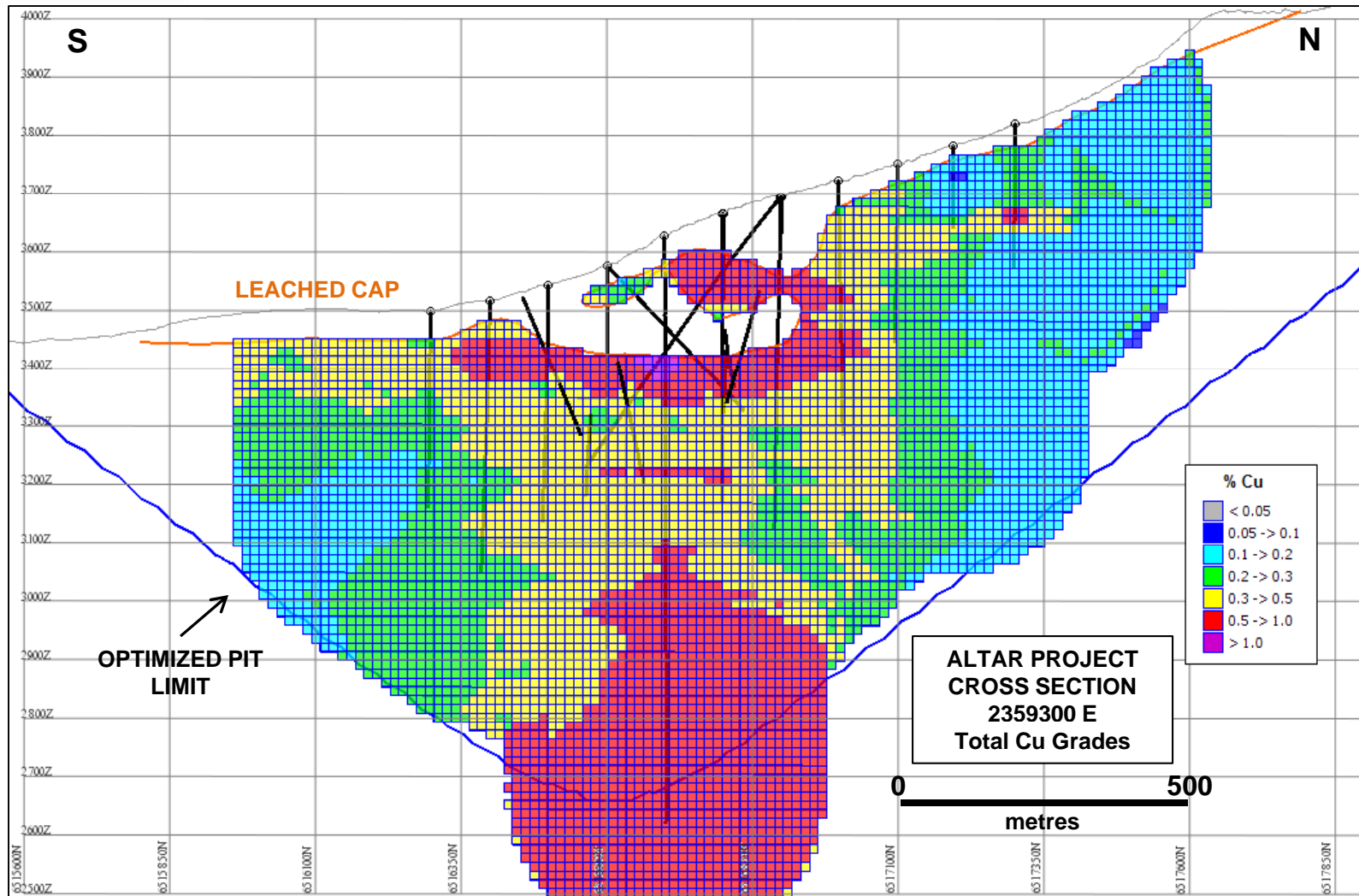
# Cross Section Looking North



Pit optimized by using metal prices of \$2.80 per lb of copper and \$850 per oz of gold and based on a 0.3% CuEq cut-off. The resource block model and supporting drill hole data are presented in the 2010 NI 43-101 technical report which will be available on the Peregrine Metals website at [www.pmet.com](http://www.pmet.com) or on SEDAR at [www.sedar.com](http://www.sedar.com) by November 18, 2010.



# Cross Section Looking East



Pit optimized by using metal prices of \$2.80 per lb of copper and \$850 per oz of gold and based on a 0.3% CuEq cut-off. The resource block model and supporting drill hole data are presented in the 2010 NI 43-101 technical report which will be available on the Peregrine Metals website at [www.pmet.com](http://www.pmet.com) or on SEDAR at [www.sedar.com](http://www.sedar.com) by November 18, 2010.